

2023



ASCLS ILLINOIS FALL MEETING

Keynote Speakers



DR. PATRICIA TILLE
ASCLS President-Elect



DR. KAMRAN MIRZA

CONTINUING
EDUCATION,
NETWORKING, AND
SOCIAL EVENTS FOR
LABORATORY
PROFESSIONALS,
EDUCATORS AND
STUDENTS!

Register at:
[ascslil.ticketleap.com/2023-
ascsls-fall-meeting/](https://ascslil.ticketleap.com/2023-ascsls-fall-meeting/)

The Rose Hotel
5200 Pearl St., Rosemont, IL
60018



OCT

| 14th |

2023






ASCLS Illinois Fall Meeting



The Rose Hotel

Rosemont, Illinois

October 14, 2023

P.A.C.E.® Approved One contact hour = one P.A.C.E.® credit

Time	Session/Topic/Speaker	
8:00am-8:50am	Check-in/REGISTRATION	
9:00am-10:00am 1.0 C.E. Hour Opening Keynote	 <p>1. Evolution of Purpose and Culture: Leadership and Strategic Design (Level Intermediate, General) <i>Becoming a leader is a journey that each individual must walk independently learning from their personal experiences. There is no perfect leader for every scenario. One must be flexible, self-aware, and know their followers to build trust. As a leader, being successful relies on Key Performance Indicators. This session will focus on leadership strategies to Keep People Interested, Keep People Informed, Keep People Involved and Keep People Inspired focusing on a strategic design process that emphasizes evolution of purpose and culture!</i></p> <p>Patricia Tille Ph.D. MLS(ASCP), AHl(AMT) FACSc <i>ASCLS-President Elect, Professor/Graduate Program Director University of Cincinnati</i></p>	
10:15am-11:15am 1.0 C.E. Hour	 <p>2. Don't Fear the Peripheral Smear: An Intro to Special Populations with Challenging Findings (Level Intermediate, Hematology) <i>While the complete blood count and peripheral blood smear are mainstays of bench hematology, this commonly ordered and performed assessment can pose unique challenges. A cursory discussion of special populations will expose new and experienced medical laboratory professionals to potential pitfalls and offer familiarization with problematic findings on microscopy.</i></p> <p>Constantine Kanakis, MD, MSc, MLS(ASCP) <i>Resident Physician, Loyola Medicine, Dept. of Pathology/Laboratory Medicine Adjunct Faculty, Loyola Parkinson School of Health Sciences & Public Health</i></p>	
11:30am-12:30pm 1.0 C.E. Hour	 <p>3. Urine Culture Utilization During Pregnancy (Level Intermediate, Microbiology) <i>Physiological changes occurring during pregnancy lead to urinalysis findings suspicious for asymptomatic bacteriuria, for which treatment is recommended in this special population. Although the potential for overprescription is concerning, recent research in an academic hospital setting revealed evidence of urine culture underutilization, suggesting underdiagnosis of asymptomatic bacteriuria during pregnancy.</i></p> <p>Sarah Bergbower, DCLS, MS, MLS(ASCP)^{CM} <i>Assistant Professor of Life Sciences Illinois Eastern Community Colleges—Olney Central College</i></p>	

12:30pm-1:30pm	Lunch and Networking	
1:30pm-2:30pm 1.0 C.E. Hour		<p>4. A Breakdown of Breakdowns: What's tearing the Laboratory Sciences apart and how to put it back together again. (Level Basic, General)</p> <p><i>For too long our field of Laboratory Science has faced the same challenges. Words like burnout, recruitment, bottlenecks, diversity, and socioeconomic issues dominate the conversation at every meeting of Laboratory Professionals. Here we will have an honest conversation of what are the root causes of the challenges we face and using successful methods of creating and maintaining pathways to get the most out of our profession.</i></p> <p>Miles Tompkins, MLT(ASCP)^{CM} <i>Medical Technology Recruiting and Retention Specialist</i></p>
2:45pm-3:45pm 1.0 C.E. Hour Closing Keynote		<p>5. Medical Ethics and the Laboratory (Level Intermediate, General)</p> <p><i>This session will introduce the common theories used to analyze bioethical dilemmas. It will provide an overview of the foundations of ethics in philosophy and contrast these foundations with the field of bioethics and healthcare ethics. Attendees will help analyze several cases that highlight important areas of pathology and laboratory medicine that require more in-depth bioethical inquiry.</i></p> <p>Kamran Mirza, MD, PhD, FASCP, MLS(ASCP) <i>Associate Professor and Vice-Chair of Education</i></p>
4pm – 5:00pm	Dinner at the Rose Hotel and travel to Social Event at Axexclusive	
5pm-7pm	<p>Social Event at Axexclusive, 4938 River Rd, Schiller Park, IL 60176</p> <p>Complimentary shuttle service offered by the ROSE hotel to event venue.</p>	

CONTINUING EDUCATION SESSIONS CONTINUING EDUCATION SESSIONS

Saturday, October 14th 9:00 a.m. - 3:45 p.m.

ASCLS-IL is an approved provider of continuing education by the P.A.C.E.[®] Program. One contact hour is equal to one P.A.C.E.[®] credit. All sessions will be P.A.C.E.[®] approved. Attendees are able to download the CE certification from the website www.ascls.org via the CE Organizer. The CE code will be provided at the end of each session and need to be claimed by **November 28, 2023.**

REGISTRATION INFORMATION:

Online registration: <http://asclsil.ticketleap.com/2023-ascls-fall-meeting>

ASCLS Member: \$30.00

Non-Member: \$55.00

ASCLS Student Member: \$15.00

Student Non-Member: \$25.00

ASCLS Emeritus Member: \$15.00

NOT A MEMBER?

Sign up for an ASCLS membership and receive member rates for the annual meeting. Visit www.ascls.org/join and submit your membership application online.

CANCELLATION POLICY:

No refunds will be provided.

CONFERENCE AND HOTEL INFORMATION:

The conference will be held at the Rose Hotel Chicago O'Hare- 5200 Pearl St, Rosemont, IL 60018.

<https://www.the-rose-hotel.com/>

Free parking available on-site. Hotel and Rosemont shuttle are complimentary. Metra North Central line allows for easy access to the hotel and downtown Chicago.

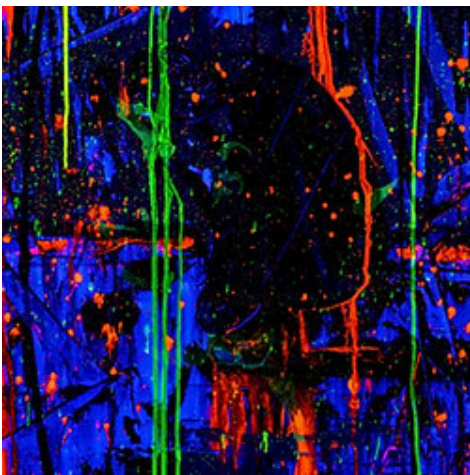
Guess what else is included with your registration?
Social Event at



<https://www.axeclusive.com/>

4938 River Road, Schiller Park, IL 60176

Private Event from 5pm – 7pm including



Splatter Room



Axe Throwing



Virtual Reality

Participants will need to sign a waiver prior to participating.

Have questions about the event? Check out the FAQ section of the website: <https://www.axeclusive.com/faq> or email Toula Castillo at demetra.castillo@gmail.com